

INSIDE THIS ISSUE

PG. 1

I Am Presence

PG 2 & 3

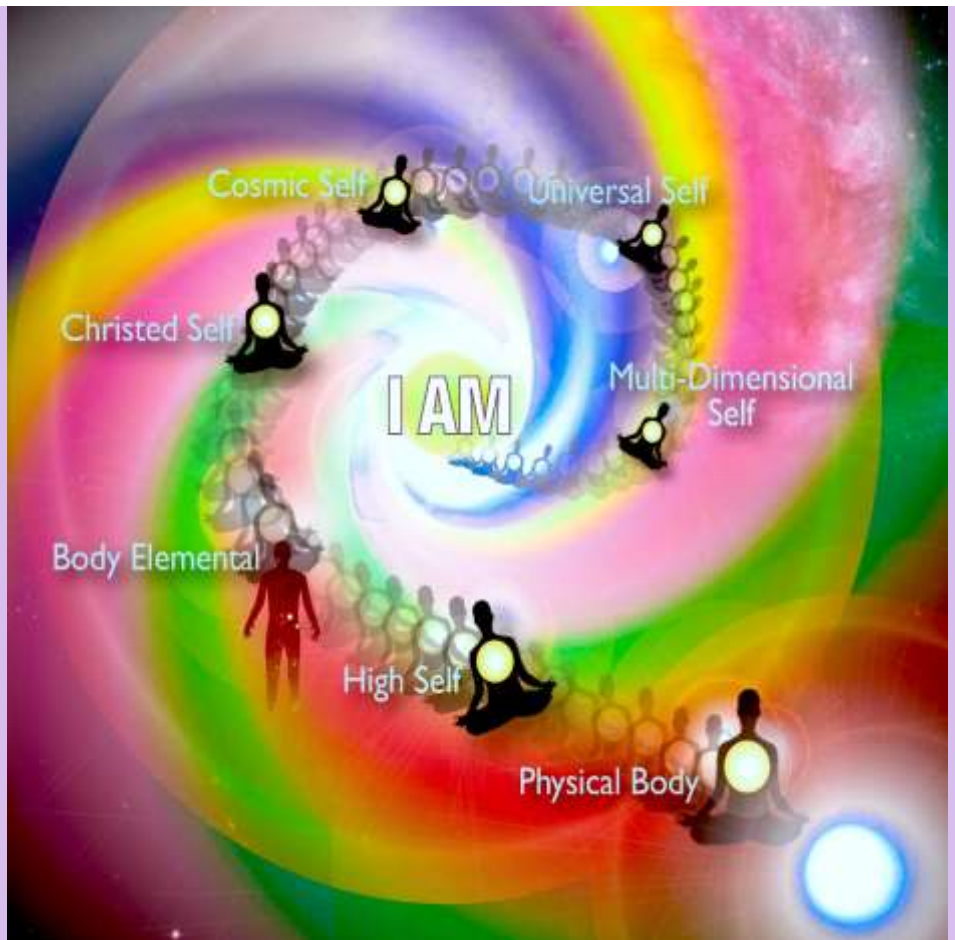
The Sacred Secret of the
Christ Within

PG 4 & 5

Upcoming Workshops

*“You are not a
drop in the ocean.
You are the entire
ocean, in a drop.”*

~ Rumi



I Am Presence Meditation:

<https://www.soulalchemyhealing.ca/workshops>



I AM PRESENCE

The I AM Presence is a collective consciousness of our Monad. It is not a physical individuality but 11 other soul personalities that work with us. The soul that is working on their ascension process is usually the one that ascends for the others.

The tools, techniques and exercises taught through [Soul Alchemy Healing](#) can be used by clients and students to develop their own unique spiritual practice, which can bring every aspect of their lives into alignment with their divine essence. This is authentic empowerment.

The link on the free meditation above will take you to a few aspects of the self and your I Am Presence. Enjoy!

The Sacred Secret of the Christ Within



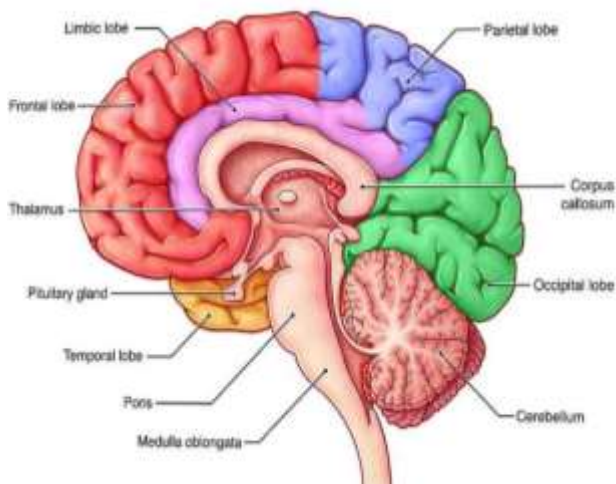
WHERE DOES THE CHRIST WITHIN US LIVE?

Here is a story of magic, sacred alchemy, how to open your intuitive channels and pure magic if I do say so myself. It is the brilliant story and secret that the ancients and the Master who came before us knew and the messages they left for us to discover this precious gift. It is the secret and the gift of how to access the Christ within. In fact Colossians 1:26-29 says, “know this glorious secret inside and out.”

So, where does the Christ within us live? The answer is ginormous, I will share some things in this newsletter. This information is so important to our energetic emergence individually and as a whole, however to completely understand and practice its techniques, a workshop is definitely necessary.

It all begins within us, as a secretion in our brains that travels through our 33 vertebrae (which are like a brain themselves), then returns to create an alchemical response that allows us to tap into our intuition better, regenerates our living bodies and illuminates our connection to the creator.

Here’s the process...



In the brain, in the Cranium, there is the Cerebrum. In the Cerebrum, the Claustrum is sitting right in the middle of the head. The Claustrum creates a secretion of brain fluid. This fluid is called Christos (the Christ) in Greek.

The oil is then differentiated in the pineal gland and the pituitary gland, before it is sent down the spinal cord as masculine the electric portion or Sun and feminine the magnetic portion or Moon. This fluid pours down the spinal cord to reach the sacral plexus in particular the spleen then becomes activated and begins to produce healing properties for anti-aging and the immune system.

The oil continues to travel to the sacrum and down the spinal cord and to the bottom or coccyx. When the Moon is transiting your Sun sign, the astrological sign the Sun was when you were born; a seed is planted in your solar plexus, which is just above the sacral plexus. Hence the saying, “as above, so below.” The stars are connected to the seed being created within each of us. How cool is this?

Once the seed is in the fluid or oil, that oil needs to return to the mid-brain. As the oil ascends up the spinal cord, the vibration of the oil/Christos increases. Unfortunately, it can't rise on its own, it needs some assistance, this is where it gets interesting. One month or so ago my guides started sharing a new technique with me. It took me repetitive meditations and practice to figure it all out. I was getting a little frustrated because I wasn't sure where this was all going. I knew this was important and worked diligently with them until it all came together. Now I have a new technique that allows us to transmute that seed and cause it to rise all the way back to the medulla oblongata; and the pons and the mid-brain. When we perform this new technique I channeled and a couple easy to follow disciplines during this 2.5 day period or moon cycle, the oil is saved!



It then rises and bursts through the heart chakra, through the throat chakra, crosses the Vagus nerve otherwise known as the Nemo gastric nerve and activates a huge network within the body (feeds the lungs, heart and the stomach); this nerve is known as or called “the tree of life”. Eventually the oil will arrive with its higher vibration, magnified 1000 fold and when it touches the optic thalamus it illuminates the optic thalamus and pineal gland; creating the process the bible calls the resurrection.

The optic thalamus was known as the light of the world by the ancient Egyptians and the Greeks; because they knew their physiology and anatomy; and they knew that this precious oil which descended from the claustrum, from the Cerebrum, and was differentiated in the pineal and pituitary glands; and descended the spinal cord, they knew that it will ascend eventually and that the enlightened portion of mankind were able to cause this Christ/oil to ascend; so that it will ascend to the optic thalamus and cause it to be “enlightened.”

Ana La Rai and I will be co-facilitating a workshop from 9am-3pm, May 6th, 2023 in which I will share

all the details, techniques and disciplines that will allow the oil to rise within you. The investment is \$175.00 USD and will be taught online as well as in person if you would like to join us in Nanaimo. More information and details on the workshop will be in the next newsletter. There will be limited space for in person attendance so pre-registering and payment is required. I'm so excited, I can hardly stay in my body!

“By doing the work to love ourselves more, I believe we will love each other better.”
~ Laverne Cox



UPCOMING WORKSHOPS

For full details go to my website calendar:

<https://www.soulalchemyhealing.com/calendar-of-events.html>

FENG SHUI...CREATING AN EXTRAORDINARY LIFE

SUN, JANUARY 15, 1PM – 4PM



There is a new Feng Shui Paradigm that has emerged for 2023. Join me and learn about this incredible new shift and how

it will change all aspects of your life!

Your investment includes a manual.

Send a \$55.00 e-transfer sent to soulalchemyhealing@gmail.com or make a payment at <https://www.soulalchemyhealing.com> to receive the address. Please make a note in the as to which workshop you are signing up for!

CRYSTAL GRIDS; THE POWER OF 24/7 HEALING AND PRAYER

SUN FEB 12 1PM – 4PM

A magical and symbiotic connection has always existed between human beings and gems. A crystal grid is a method of creating a sacred space by placing stones of specific metaphysical properties in a geometric pattern to broadcast a specific intention and create a powerful energetic transmitter. ***Your investment includes a manual.***

Send a \$55.00 e-transfer sent to soulalchemyhealing@gmail.com or make a payment at <https://www.soulalchemyhealing.com> to receive the address

ACCURATE DOWSING AND PENDULUM USE

SUN MARCH 12 1PM - 4PM



Learning basic techniques in dowsing enables you to tap into information you may require regarding food choices, supplements, products you'd like to purchase, healing tools or even the most appropriate colour to wear for the day. It is a powerful tool that can lead to more empowering choices and a happier life. This is a hands-on and interactive program, you will learn everything you need to know to start building a relationship with your pendulum and seeking guidance for the questions you want answers.

Your investment includes a manual.

Send a \$55.00 e-transfer sent to soulalchemyhealing@gmail.com or make a payment at <https://www.soulalchemyhealing.com> to receive the address. Please make a note in the as to which workshop you are signing up for!

SACRED CIRCLE

THE THIRD THURSDAY OF EACH MONTH

6PM-8PM



Today sacred circles are sprouting up everywhere, in astonishing variety providing a safe haven where essential values and beliefs can be discussed and embraced. Sacred Circles allow us to engage a group to explore our relationship to the sacred, and honour the divine in everyday life while offering wise advice to the whole. Experience listening and being heard without an agenda, rotating leadership, empowerment and heartfelt community support.

What you need to bring:

Your beautiful spirit, whatever you need to feel physically comfortable (pillow, throw) and a light snack to share during the break.

Email me if you would like to attend and I'll provide the address.

\$10.00 donation at the door